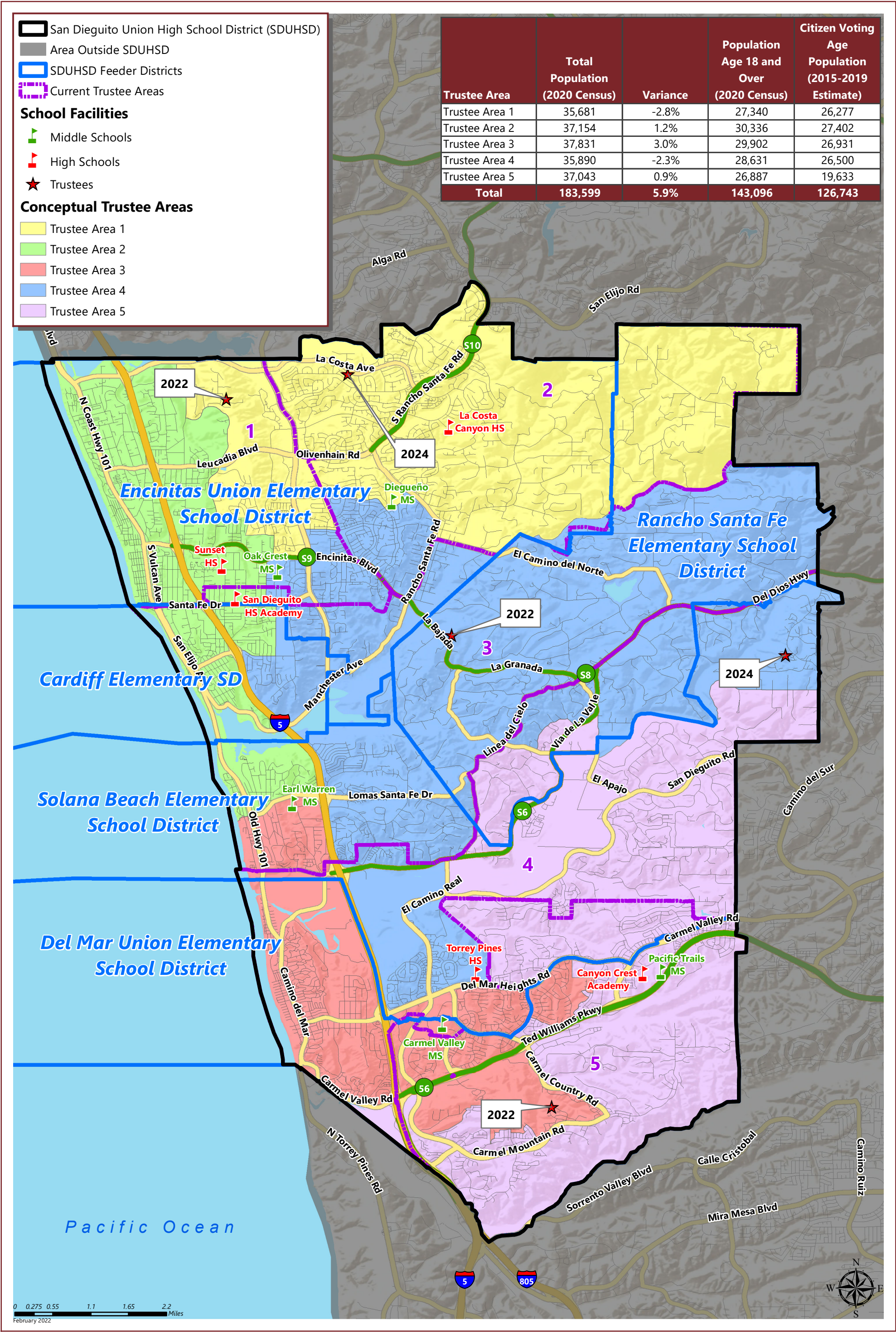


# SAN DIEGUITO UNION HIGH SCHOOL DISTRICT

## CONCEPTUAL TRUSTEE AREAS - SCENARIO 8





SAN DIEGUITO UNION HIGH SCHOOL DISTRICT

CONCEPTUAL TRUSTEE AREAS - SCENARIO 8

Total Population:	183,599	Ideal Population:	36,720	Variance:	5.9%
-------------------	---------	-------------------	--------	-----------	------

Total Population (2020 Census)					
	Trustee Area 1	Trustee Area 2	Trustee Area 3	Trustee Area 4	Trustee Area 5
Population	35,681	37,154	37,831	35,890	37,043
Population Variance	-1,039	434	1,111	-830	323
	-2.8%	1.2%	3.0%	-2.3%	0.9%
Hispanic/Latino	10.4%	17.1%	10.5%	9.7%	9.2%
White	75.4%	72.2%	63.2%	75.5%	50.6%
Black/ African American	0.7%	0.5%	0.7%	0.5%	1.2%
American Indian/ Alaska Native	0.1%	0.2%	0.1%	0.2%	0.1%
Asian	6.8%	3.6%	19.0%	8.2%	32.3%
Native Hawaiian/ Other Pacific Islander	0.1%	0.1%	0.1%	0.1%	0.1%
Other	0.4%	0.7%	0.7%	0.7%	0.6%
Two or More Races	6.1%	5.6%	5.8%	5.2%	6.0%

Population 18 and Over (2020 Census)					
	Trustee Area 1	Trustee Area 2	Trustee Area 3	Trustee Area 4	Trustee Area 5
Population	27,340	30,336	29,902	28,631	26,887
Hispanic/Latino	9.1%	15.7%	9.4%	9.0%	8.4%
White	77.7%	74.3%	66.9%	77.6%	54.1%
Black/ African American	0.8%	0.5%	0.7%	0.5%	1.1%
American Indian/ Alaska Native	0.1%	0.2%	0.1%	0.2%	0.1%
Asian	7.4%	3.9%	17.9%	8.1%	31.5%
Native Hawaiian/ Other Pacific Islander	0.1%	0.1%	0.0%	0.1%	0.1%
Other	0.5%	0.7%	0.6%	0.6%	0.5%
Two or More Races	4.4%	4.5%	4.3%	3.9%	4.2%

Citizens by Voting Age Population Estimate (2015-2019)					
	Trustee Area 1	Trustee Area 2	Trustee Area 3	Trustee Area 4	Trustee Area 5
Population	26,277	27,402	26,931	26,500	19,633
Hispanic/Latino	6.8%	12.0%	8.7%	8.8%	7.5%
White	84.1%	81.6%	74.7%	83.1%	62.8%
Black/ African American	0.8%	0.8%	1.5%	0.8%	0.4%
American Indian/ Alaska Native	0.3%	0.2%	0.1%	0.0%	0.9%
Asian	6.2%	3.6%	12.2%	5.6%	26.3%
Native Hawaiian/ Other Pacific Islander	0.3%	0.1%	0.0%	0.0%	0.0%
Other	0.0%	0.0%	0.0%	0.0%	0.0%
Two or More Races	1.6%	1.7%	2.7%	1.7%	2.0%