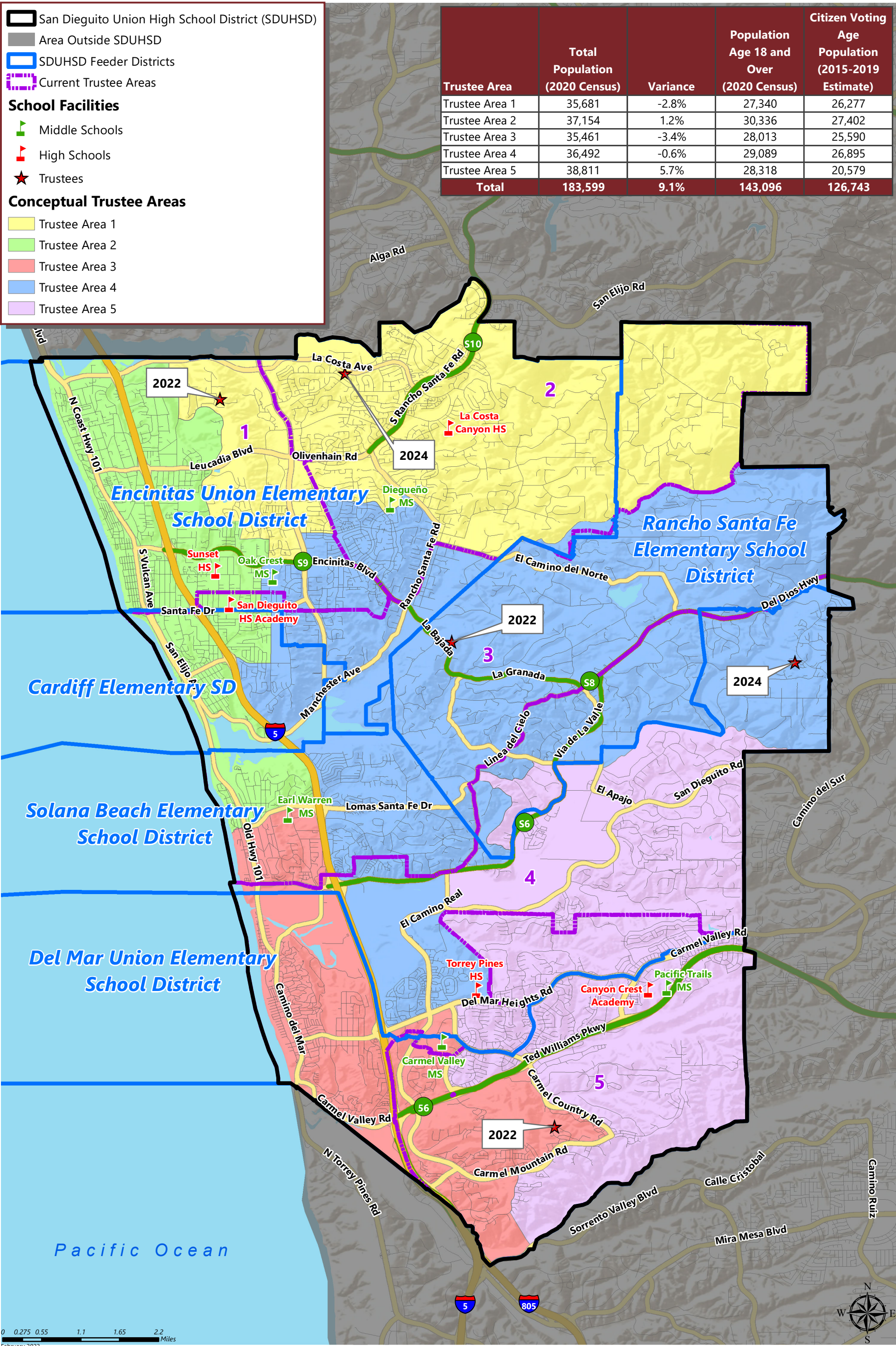


SAN DIEGUITO UNION HIGH SCHOOL DISTRICT

CONCEPTUAL TRUSTEE AREAS - SCENARIO 7



SAN DIEGUITO UNION HIGH SCHOOL DISTRICT

CONCEPTUAL TRUSTEE AREAS - SCENARIO 7

Total Population:	183,599	Ideal Population:	36,720	Variance:	9.1%
-------------------	---------	-------------------	--------	-----------	------

Total Population (2020 Census)					
	Trustee Area 1	Trustee Area 2	Trustee Area 3	Trustee Area 4	Trustee Area 5
Population	35,681	37,154	35,461	36,492	38,811
Population Variance	-1,039	434	-1,259	-228	2,091
	-2.8%	1.2%	-3.4%	-0.6%	5.7%
Hispanic/Latino	10.4%	17.1%	11.1%	9.7%	8.7%
White	75.4%	72.2%	61.2%	75.6%	52.7%
Black/ African American	0.7%	0.5%	1.0%	0.5%	0.9%
American Indian/ Alaska Native	0.1%	0.2%	0.1%	0.2%	0.1%
Asian	6.8%	3.6%	20.1%	8.1%	30.8%
Native Hawaiian/ Other Pacific Islander	0.1%	0.1%	0.1%	0.1%	0.1%
Other	0.4%	0.7%	0.6%	0.7%	0.6%
Two or More Races	6.1%	5.6%	5.8%	5.2%	6.1%

Population 18 and Over (2020 Census)					
	Trustee Area 1	Trustee Area 2	Trustee Area 3	Trustee Area 4	Trustee Area 5
Population	27,340	30,336	28,013	29,089	28,318
Hispanic/Latino	9.1%	15.7%	10.0%	9.0%	7.9%
White	77.7%	74.3%	65.0%	77.6%	56.3%
Black/ African American	0.8%	0.5%	1.0%	0.5%	0.9%
American Indian/ Alaska Native	0.1%	0.2%	0.1%	0.2%	0.1%
Asian	7.4%	3.9%	19.0%	8.1%	30.0%
Native Hawaiian/ Other Pacific Islander	0.1%	0.1%	0.1%	0.1%	0.1%
Other	0.5%	0.7%	0.6%	0.6%	0.5%
Two or More Races	4.4%	4.5%	4.2%	4.0%	4.2%

Citizens by Voting Age Population Estimate (2015-2019)					
	Trustee Area 1	Trustee Area 2	Trustee Area 3	Trustee Area 4	Trustee Area 5
Population	26,277	27,402	25,590	26,895	20,579
Hispanic/Latino	6.8%	12.0%	8.9%	8.8%	7.2%
White	84.1%	81.6%	73.8%	83.1%	64.5%
Black/ African American	0.8%	0.8%	1.8%	0.8%	0.2%
American Indian/ Alaska Native	0.3%	0.2%	0.1%	0.0%	0.8%
Asian	6.2%	3.6%	13.1%	5.5%	24.8%
Native Hawaiian/ Other Pacific Islander	0.3%	0.1%	0.0%	0.0%	0.0%
Other	0.0%	0.0%	0.0%	0.0%	0.0%
Two or More Races	1.6%	1.7%	2.4%	1.8%	2.4%