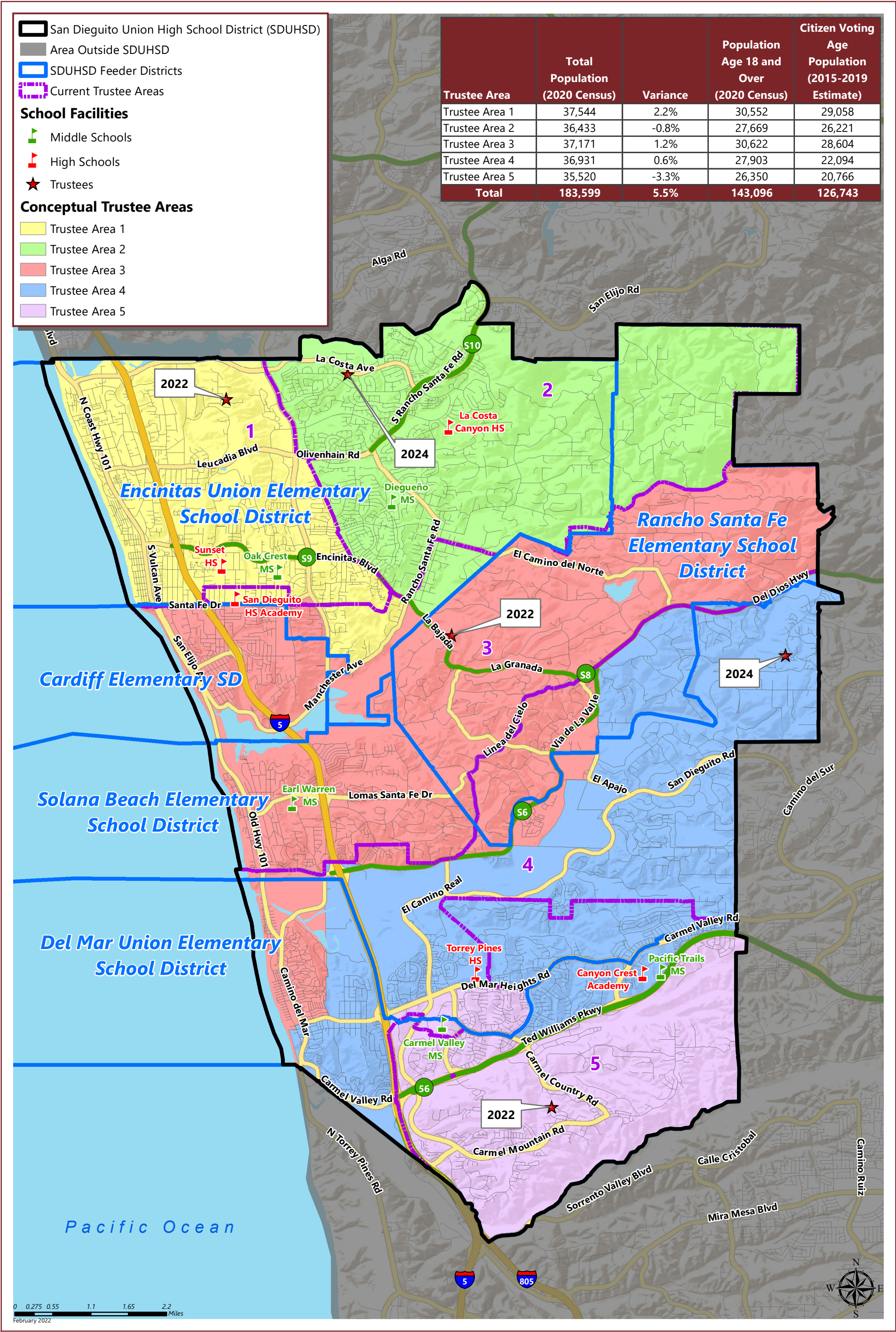


SAN DIEGUITO UNION HIGH SCHOOL DISTRICT

CONCEPTUAL TRUSTEE AREAS - SCENARIO 6



SAN DIEGUITO UNION HIGH SCHOOL DISTRICT

CONCEPTUAL TRUSTEE AREAS - SCENARIO 6

Total Population:	183,599	Ideal Population:	36,720	Variance:	5.5%
-------------------	---------	-------------------	--------	-----------	------

Total Population (2020 Census)					
	Trustee Area 1	Trustee Area 2	Trustee Area 3	Trustee Area 4	Trustee Area 5
Population	37,544	36,433	37,171	36,931	35,520
Population Variance	824	-287	451	211	-1,200
	2.2%	-0.8%	1.2%	0.6%	-3.3%
Hispanic/Latino	16.6%	10.7%	11.9%	8.1%	9.5%
White	72.3%	75.3%	77.2%	58.9%	51.7%
Black/ African American	0.5%	0.7%	0.5%	1.0%	0.9%
American Indian/ Alaska Native	0.2%	0.1%	0.2%	0.1%	0.1%
Asian	4.2%	6.2%	4.3%	25.7%	30.6%
Native Hawaiian/ Other Pacific Islander	0.1%	0.1%	0.1%	0.1%	0.1%
Other	0.6%	0.6%	0.7%	0.6%	0.7%
Two or More Races	5.4%	6.3%	5.0%	5.6%	6.4%

Population 18 and Over (2020 Census)					
	Trustee Area 1	Trustee Area 2	Trustee Area 3	Trustee Area 4	Trustee Area 5
Population	30,552	27,669	30,622	27,903	26,350
Hispanic/Latino	15.2%	9.7%	10.5%	7.4%	8.7%
White	74.7%	77.4%	79.4%	62.5%	55.2%
Black/ African American	0.6%	0.7%	0.5%	1.0%	1.0%
American Indian/ Alaska Native	0.2%	0.1%	0.2%	0.1%	0.1%
Asian	4.6%	6.8%	4.6%	24.4%	29.9%
Native Hawaiian/ Other Pacific Islander	0.1%	0.1%	0.1%	0.1%	0.0%
Other	0.5%	0.6%	0.6%	0.5%	0.6%
Two or More Races	4.2%	4.6%	4.0%	4.0%	4.5%

Citizens by Voting Age Population Estimate (2015-2019)					
	Trustee Area 1	Trustee Area 2	Trustee Area 3	Trustee Area 4	Trustee Area 5
Population	29,058	26,221	28,604	22,094	20,766
Hispanic/Latino	11.4%	8.3%	8.8%	7.4%	7.6%
White	81.6%	83.1%	85.0%	71.5%	64.2%
Black/ African American	0.8%	0.8%	0.7%	0.8%	1.7%
American Indian/ Alaska Native	0.2%	0.3%	0.1%	0.2%	0.6%
Asian	4.4%	5.4%	3.8%	17.6%	23.4%
Native Hawaiian/ Other Pacific Islander	0.1%	0.3%	0.0%	0.0%	0.0%
Other	0.0%	0.0%	0.0%	0.0%	0.0%
Two or More Races	1.4%	1.8%	1.6%	2.5%	2.5%