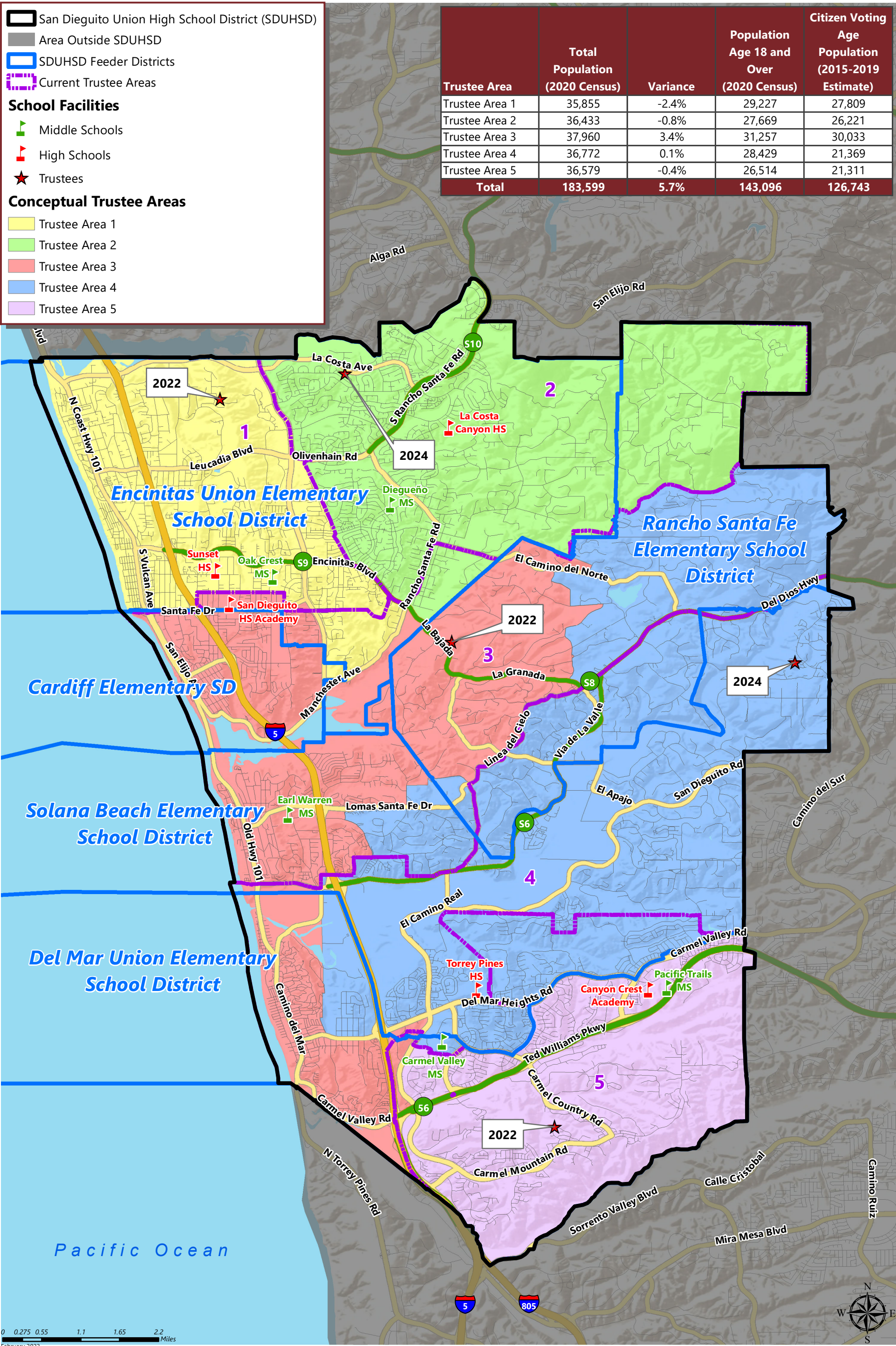


SAN DIEGUITO UNION HIGH SCHOOL DISTRICT

CONCEPTUAL TRUSTEE AREAS - SCENARIO 1B



SAN DIEGUITO UNION HIGH SCHOOL DISTRICT

CONCEPTUAL TRUSTEE AREAS - SCENARIO 1B

Total Population:	183,599	Ideal Population:	36,720	Variance:	5.7%
-------------------	---------	-------------------	--------	-----------	------

Total Population (2020 Census)					
	Trustee Area 1	Trustee Area 2	Trustee Area 3	Trustee Area 4	Trustee Area 5
Population	35,855	36,433	37,960	36,772	36,579
Population Variance	-865	-287	1,240	52	-141
	-2.4%	-0.8%	3.4%	0.1%	-0.4%
Hispanic/Latino	15.6%	10.7%	13.2%	7.9%	9.6%
White	73.2%	75.3%	75.4%	61.4%	50.7%
Black/ African American	0.5%	0.7%	0.5%	0.7%	1.1%
American Indian/ Alaska Native	0.2%	0.1%	0.2%	0.1%	0.1%
Asian	4.2%	6.2%	4.7%	24.0%	31.2%
Native Hawaiian/ Other Pacific Islander	0.1%	0.1%	0.1%	0.1%	0.1%
Other	0.6%	0.6%	0.7%	0.7%	0.5%
Two or More Races	5.5%	6.3%	5.2%	5.1%	6.6%

Population 18 and Over (2020 Census)					
	Trustee Area 1	Trustee Area 2	Trustee Area 3	Trustee Area 4	Trustee Area 5
Population	29,227	27,669	31,257	28,429	26,514
Hispanic/Latino	14.2%	9.7%	11.7%	7.3%	8.8%
White	75.6%	77.4%	77.8%	64.9%	53.9%
Black/ African American	0.6%	0.7%	0.6%	0.8%	1.1%
American Indian/ Alaska Native	0.2%	0.1%	0.2%	0.1%	0.1%
Asian	4.6%	6.8%	5.0%	22.5%	30.9%
Native Hawaiian/ Other Pacific Islander	0.1%	0.1%	0.1%	0.1%	0.1%
Other	0.5%	0.6%	0.6%	0.6%	0.5%
Two or More Races	4.3%	4.6%	4.1%	3.8%	4.6%

Citizens by Voting Age Population Estimate (2015-2019)					
	Trustee Area 1	Trustee Area 2	Trustee Area 3	Trustee Area 4	Trustee Area 5
Population	27,809	26,221	30,033	21,369	21,311
Hispanic/Latino	10.7%	8.3%	9.6%	6.5%	8.4%
White	82.4%	83.1%	83.2%	74.2%	62.9%
Black/ African American	0.6%	0.8%	1.3%	1.2%	0.6%
American Indian/ Alaska Native	0.2%	0.3%	0.0%	0.0%	0.9%
Asian	4.5%	5.4%	3.9%	16.0%	24.9%
Native Hawaiian/ Other Pacific Islander	0.1%	0.3%	0.0%	0.0%	0.0%
Other	0.0%	0.0%	0.0%	0.0%	0.0%
Two or More Races	1.5%	1.8%	2.0%	2.2%	2.3%